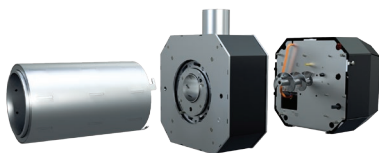


KIPI PELLET BURNERS - The solution for the most demanding users

- The capability to burn pellets of lower quality and agripellets.
- **Rotary combustion chamber and blower chamber** - make the burner to continuously clean itself and work efficiently without clogging.
- **Bearings** - the design of the bearings is of great importance for proper burner operation. Our solution guarantees trouble-free operation.
- **Seamless combustion chamber** - i.e. one-piece tube, without welds ensures increased strength this component.
- **Airflow divided into primary and secondary (after-burning) flow** - reduces emissions and increases efficiency of the burner.



Modular design - fast and simple installation and servicing of the burner

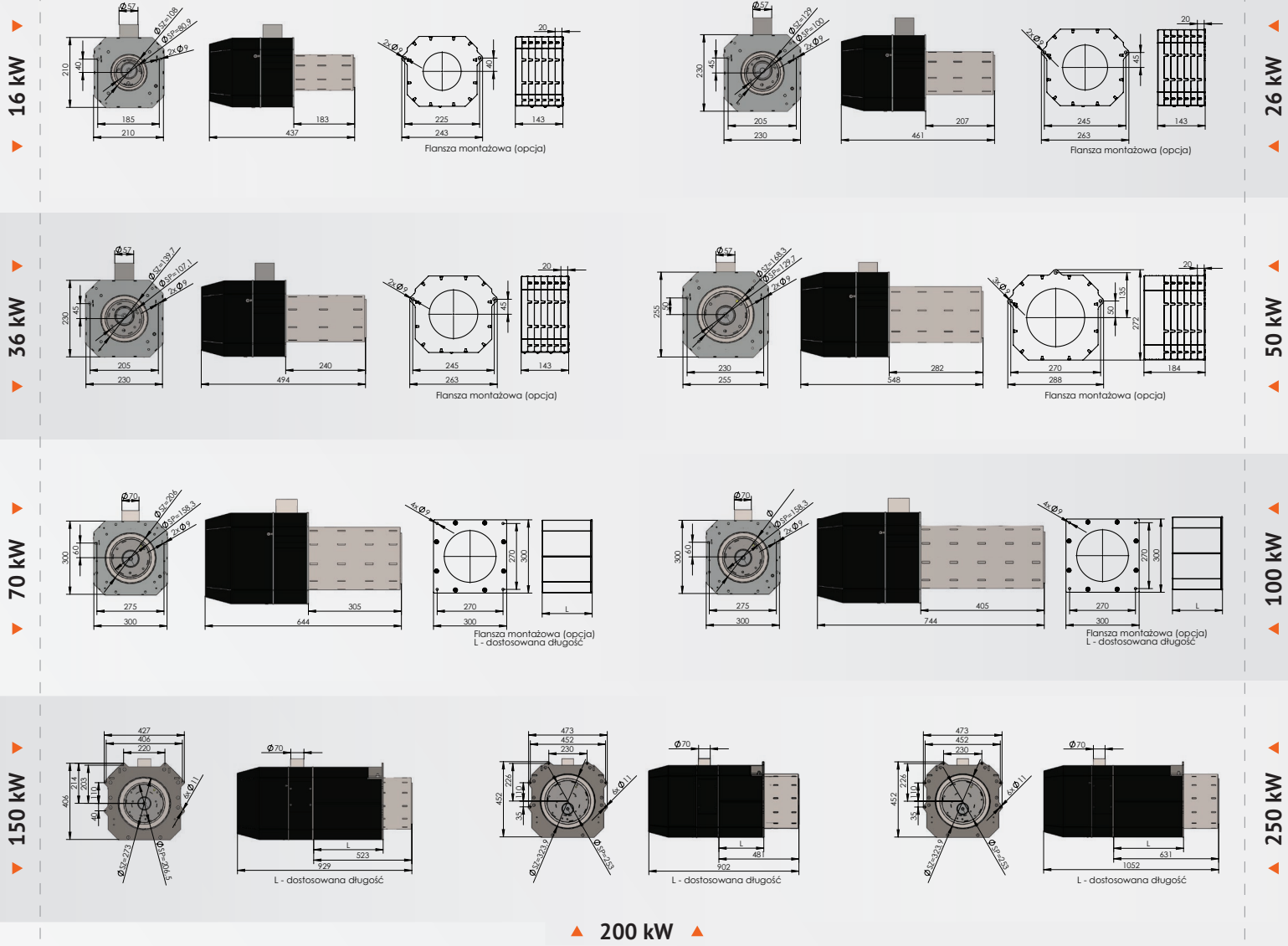


Modern control - a simple and intuitive ability to control the operation of the burner also via the Internet



Pellet burners are available from 16kW to 250kW

TECHNICAL DATA



KIPI PELLETT BURNERS

- standard equipment
- optional equipment

